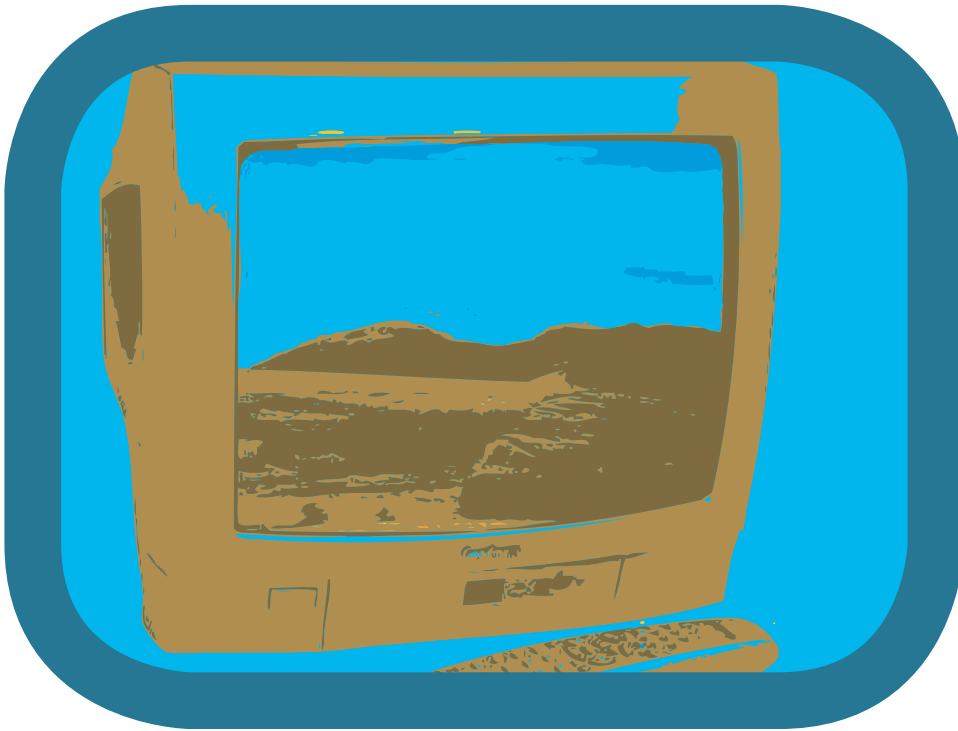


Buying a New TV



The worksheets in this chapter are based on the following areas:

- language used when buying a new TV,
- rounding off and estimating numbers,
- using teletext, and
- reading football tables.

For help with the worksheets, you can:

- call the NALA Freephone support line at 1800 20 20 65 on Monday to Friday between 10am and 4pm, or
- check out the Really Useful Guide to Words and Numbers Web site on www.rug.ie.

Reading: Advertisements for New TVs

Have a look at this ad for TVs.

TV World
Where lower prices don't mean lower quality

| Model | RRP | PRFC | Take Home Price |
|--------------------|-------------|---------|-----------------|
| Samsung 15" LCD | Euro 334.50 | Euro 15 | Euro 349.50 |
| Samsung 28" Plasma | Euro 789 | Euro 22 | Euro 811 |
| Philips 15" LCD | Euro 349 | Euro 15 | Euro 364 |
| Philips 28" Plasma | Euro 795 | Euro 22 | Euro 817 |
| JVC 15" LCD | Euro 365 | Euro 15 | Euro 370 |
| JVC 28" LCD | Euro 855.50 | Euro 22 | Euro 877.50 |

There are some words and abbreviations on the ad to do with TVs. See if you can match these words up to their meanings on the next page.

Reading: Advertisements for New TVs

Join up words and letters with their meaning.
The first one of done for you.

TV

Producer Recycling Fund Contribution: This is a government charge since August 2005 to cover the cost of recycling electrical goods. You have to pay this when buying all electrical goods.

LCD

Television

PRFC

High Definition: This refers to the quality of the picture on the screen. HD pictures are much clearer than other pictures.

HD

This refers to the type of material used in making a TV screen. TVs with these screens are flat, have better quality pictures than LCD TVs and are more expensive.

Plasma

50 inches. This is the size of the TV screen and is measured from the top left corner to the bottom right corner.

50"

Liquid Crystal Display: This is a type of flat screen television. They offer good quality pictures but are not as expensive as Plasma TVs.

Reading: Advertisements for New TVs

Scan the ad for TVs on page 22 and answer these questions.

1. How much is the Philips LCD 15" flat TV?

2. How much is the P.R.F.C. on the Samsung Plasma TV?

3. How much is the Phillips 28" wide screen TV **without** the P.R.F.C. price?

4. Which TV costs €349.50?

5. How much is the P.R.F.C. on the Philips 28" wide screen?

Reading: Newspaper Articles

TV sales rocket as World Cup fever hots up

Sunday Independent, May 14th 2006

The LCD and plasma TV market is getting very big, with one store in the UK, Curry's, last week reporting a sale of a TV every 15 seconds, ahead of the World Cup which starts next month.

With SSIA money on the way, a Sunday Independent price survey has found that Irish consumers are likely to spend more to own a high definition (HD) television.

The survey compared prices for new TVs in Irish stores with UK prices and Internet prices. The cost for TVs was higher in Ireland than in the UK, even when VAT and delivery were added.

For example, a Samsung 42"HD unit will cost you €1,899 at Dixons but buying online will set you back €300 less. At DID Electrical, a Philips 20" LCD set costs just under €755, whereas in the UK it costs £435 (€633).

The Office of the Director of Consumer Affairs said that it urges people to "shop around for the best price, which could indeed be online rather than in a street store".

Here are the meanings of the underlined words:

SSIA – The government savings scheme

VAT – Value Added Tax. This tax is added to most things you buy.

Buying online – Buying over the Internet with a credit card

Consumer – People who buy goods

Reading: Newspaper Articles

Answer True or False to the following questions.
The first one is done for you.

| | True | False |
|---|-------------------------------------|--------------------------|
| 1. Curry's sold a TV every 15 seconds. | <input checked="" type="checkbox"/> | <input type="checkbox"/> |
| 2. The cost of TVs in Ireland is higher than in the UK. | <input type="checkbox"/> | <input type="checkbox"/> |
| 3. HD stands for 'high driving'. | <input type="checkbox"/> | <input type="checkbox"/> |
| 4. A Samsung 42" HD TV costs €1,899 at Dixons. | <input type="checkbox"/> | <input type="checkbox"/> |
| 5. At DID Electrical, a Philips 20" LCD set costs just under €355. | <input type="checkbox"/> | <input type="checkbox"/> |
| 6. Buying a TV online can be cheaper. | <input type="checkbox"/> | <input type="checkbox"/> |
| 7. Buying a TV in the UK is cheaper than buying a TV in Ireland. | <input type="checkbox"/> | <input type="checkbox"/> |
| 8. The Office of the Director of Consumer Affairs urges people to "shop around for the best price". | <input type="checkbox"/> | <input type="checkbox"/> |

Numeracy: Rounding Off

When you are shopping, it is a good idea to round off cents to the nearest euro. It makes it easier to work out your shopping.

So,

- Rounding off €12.95 to the nearest euro is €13. This is because 95c is nearer to €13 than to €12.
- Rounding off €205.10 to the nearest euro is €205. This is because 10c is nearer to €205 than to €206

See if you can round off the prices of these TVs to the nearest euro. Circle the right answer. The first one is done for you.

- | | | | | |
|----|-------------------------|--------|--------|--------|
| 1. | €349.95 is nearest to | €349 | €350 | €399 |
| 2. | €554.95 is nearest to | €555 | €558 | €255 |
| 3. | €3,149.95 is nearest to | €3,149 | €3,148 | €3,150 |
| 4. | €210.04 is nearest to | €210 | €211 | €220 |
| 5. | €99.95 is nearest to | €100 | €110 | €98 |

Numeracy: Estimating

Sometimes, when we buy new things, we can round off the prices to the nearest 10. For example,

- Rounding €18 to the nearest 10 would give €20. This is because the number 18 is near to 20.
- Rounding off 31 to the nearest ten would give you 30. This is because the number 31 is near to 30.

When we round off, we get an **estimate**. An **estimate** is a little **more** or a little **less** than the real amount.

**Estimate the prices in the shopping list below.
The first one is done for you.**

| | | |
|-------------------------|----------|--------------|
| 1. Litre of milk €0.95 | Estimate | <u>€1.00</u> |
| 2. Tea €1.99 | Estimate | _____ |
| 3. Soft drink €1.02 | Estimate | _____ |
| 4. Loaf of bread €1.01 | Estimate | _____ |
| 5. Cigarettes €6.85 | Estimate | _____ |
| 6. Washing Powder €5.99 | Estimate | _____ |
| 7. Soap €1.10 | Estimate | _____ |
| | Total: | _____ |

Now use a calculator (see page 110) to work out the real total!

Real Total: _____

How close was your estimate?

Reading: Teletext

Teletext is information you can read on the TV. It gives you information on topics like the weather, news, sport and travel. Most TV stations have their own teletext service. RTÉ has a teletext service called Aertel. BBC has a teletext service called Ceefax.

How do you use Aertel Teletext?

1. Make sure your TV is tuned to RTÉ 1 or RTÉ 2.
2. Press the text button on your remote control. Most buttons will have lines on them, or have the word 'text' on it, like these:



3. The Aertel Homepage will come up like this below. The number of the page is beside each item on the list. For example, weather can be found by entering the number 160 by using your remote control.

| | | | |
|-------------------|------------|-------------------|------------|
| News Headlines | 102 | Television | 170 |
| Business | 130 | Sports News | 200 |
| Lotto Numbers | 150 | Racing Index | 250 |
| Euromillions | 151 | Competitions | 620 |
| Weather | 160 | Phone Services | 610 |
| RTÉ 1 only | | RTÉ 2 only | |
| Entertainment | 300 | Daily Farm | 410 |
| Cinema | 310 | RTÉ Merchandise | 420 |
| Theatre | 330 | Children | 440 |
| Reviews | 345 | Young Writers | 447 |
| Prog Guidance | 355 | Public Info | 450 |
| Holidays | 500 | Local Sports | 500 |
| Bus Eireann | 550 | Deaf Info | 520 |
| Dublin Airport | 571 | RTÉ Technical | 530 |
| Cork Airport | 573 | Local Soccer | 540 |
| Shannon Airp't | 575 | Local GAA | 560 |
| A-Z Index | 595 | Blood Donation | 691 |
| WEATHER | 160 | NEWS INDEX | 103 |

Reading: Football Tables

You can find out sports results by going to page 200 on Aertel. The table below shows some soccer results from the Eircom League taken from page 236 of Aertel.

| Eircom League Premier Division Nov 17 | | | | | | | |
|---------------------------------------|----|----|----|----|----|----|-----|
| | P | W | D | L | F | A | Pts |
| Shelbourne | 30 | 18 | 8 | 4 | 60 | 27 | 62 |
| Derry City | 30 | 18 | 8 | 4 | 46 | 20 | 62 |
| Drogheda U | 30 | 16 | 10 | 4 | 37 | 23 | 58 |
| Cork City | 30 | 15 | 11 | 4 | 37 | 15 | 5 |
| Sligo Rvrs | 30 | 11 | 7 | 12 | 33 | 42 | 40 |
| UCD | 30 | 9 | 11 | 10 | 26 | 26 | 38 |
| St Pat's A | 30 | 9 | 10 | 11 | 32 | 29 | 37 |
| Longford Tn | 30 | 8 | 10 | 12 | 23 | 27 | 34 |
| Bohemians | 30 | 9 | 5 | 16 | 29 | 34 | 29 |
| Bray Wndrs | 30 | 3 | 8 | 19 | 22 | 64 | 17 |
| Waterford U | 30 | 2 | 6 | 22 | 20 | 58 | 12 |

These types of tables are organised in rows across (→) the screen and columns down (↓) the screen. The team at the top, in this case Shelbourne, are the leaders, while Waterford United are last, at the bottom of the table.

Reading: Football Tables

See if you can figure out what each of the columns mean. Match the column title with its meaning. The first one is done for you.

| | |
|-----|--|
| P | For: The number of goals a team has scored. |
| W | Played: This number of games a team has played. |
| D | Won: The number of games a team has won. |
| L | Drawn: The number of games a team has drawn. |
| F | Points: The number of points a team has earned. |
| A | Against: The number of goals that have been scored against a team. |
| Pts | Lost: The number of games a team has lost. |

TIP: A win is worth 3 points, a draw is worth 1 point and a loss is no points.

Football Table

Here is a list of football results for World Cup matches.

| | | |
|----------------|--------------|----------------|
| Ireland | 1 – 0 | Germany |
| England | 2 – 3 | Ireland |
| France | 1 – 1 | Germany |
| Germany | 3 – 4 | England |
| Ireland | 2 – 2 | France |
| England | 0 – 1 | France |

As you see from the table below,

- Ireland won two matches, so $3 + 3 = 6$ points.
- Ireland had one draw, so they get 1 point.
- Ireland have 7 points.

Try to fill in the points for the rest of teams, England, France and Germany.

| Teams | P | W | D | L | PTS |
|--------------|----------|----------|----------|----------|------------|
| Ireland | 3 | 2 | 1 | 0 | 7 |
| Germany | 3 | | | | |
| England | 3 | | | | |
| France | 3 | | | | |